



“Coming together is the beginning...”

Working together is progress...”

Staying together is success!”



## FLAT 103

2 BHK  
1038 SFT  
NORTH FACING



## FLAT 104

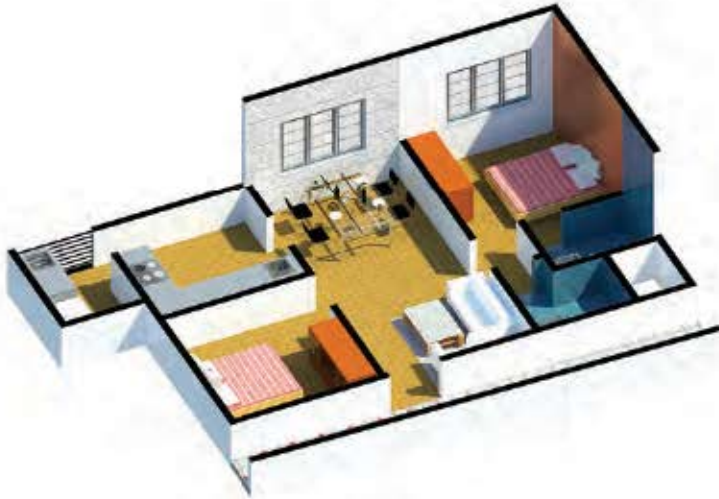
2 BHK  
1178 SFT  
NORTH FACING



## FLAT 106

2 BHK  
1260 SFT  
NORTH FACING





## FLAT 110

2 BHK  
940 SFT  
NORTH FACING



## FLAT 105

2 BHK  
1193 SFT  
NORTH FACING



## FLAT 107

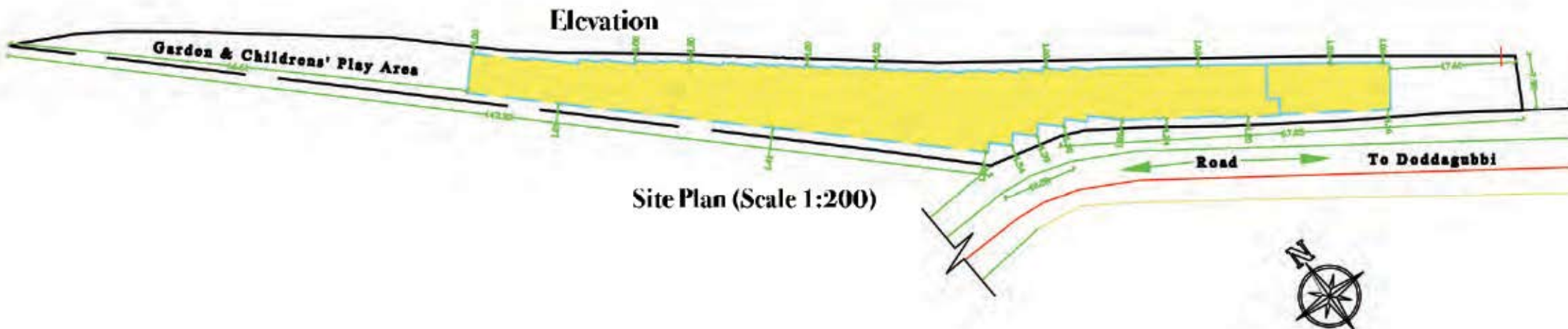
2 BHK  
1224 SFT  
NORTH FACING





Roma Regency Residential Apartment, your dream home, is set in a pristine location where you can experience peace in the midst of nature in one of the fastest developing and preferred areas in Bangalore - Doddagubbi cross, Hennur main and conveniently located to work places, educational institutions, medical facilities, retail outlets as well as transport facilities to the airport and city centre. Roma Regency has thirty 2BHK flats spread over 3 floors, fully vastu compliant, with 24x7 Security & C.C.T.V cameras, ample car parking space, sump tanks and rainwater harvesting facility available for storage. Each flat is optimally designed and built with the best quality to ensure comfort, convenience, a sense of security, satisfaction and absolute affordability, which goes unsaid. A place where you can enjoy the true feel of a home, a lifetime of joy that truly satisfies your every need as perfect as possible in every way "Roma Regency" apartment also provides commercial rental space of 1208 sqft on each floor.

Give us a call to arrange for a visit to the show flat. Surely you will be convinced of all that Roma Regency has to offer.



## AMENITIES

**Lift**  
6 Passenger Capacity – Johnson Lifts & Escalators

**Diesel Genset**  
Power Backup For Individual Flats, Common Areas & Lift

**Parking**  
36 Covered Spaces

**STP Unit**  
Capacity - 25 KLD

**Garbage Collection**  
Wet & Dry Waste

**Rainwater Harvesting Unit**

**Security**  
24x7 CCTV Surveillance

**Garden & Childrens' Play Area**

**Commercial Space On Each Floor**

**Open Air Terrace**

**Sump Tank**  
40000 ltr. capacity

## PROXIMITY

Brighton School - 300 m

Legacy School - 1 km.

Godwin School - ½ km.

Christ the king/CSI Churches - 1 ½ km.

Dattatreya Peetha Temple - 300 m

Ayyappaswamy Temple - ½ km.

Mediderma Hospital - 1 km

Chris Super Speciality Hospital - 8 km.

Doddagubbi Bus stand - 1 ½ km.

BESCOM office - 1 ½ km.

Nanjundeshwara Kalyana Mantappa - 1 km

## SPECIFICATIONS

**Structure**  
RCC Framed Structure

**Walls**  
Solid Cement Blocks

**Windows**  
3 Track Aluminium Powder Coated  
MS Fabricated Safety Grill

**Doors**  
*Main Door*  
Teak Wood Frame with Skin Panel Shutters

*Other Doors*  
Sal Wood Frame with Flush Shutters

**Kitchen**  
Glazed Tiles Dado upto 2' height, SS Sink ,  
Black Granite Cooking Platform, Copper Gas Pipeline  
from Utility

**Bathroom**  
Anti-skid Ceramic Tile Flooring, Glazed Tiles Dado  
upto 7' height, Sanitary Fitting -Hindware,  
CP Fittings & Accessories - Jaquar

**Paint -Asian Paints**  
Internal Wall with Tractor Emulsion Paints  
External Wall with Weather /Water proof with Apex  
Finish

**Electrical**  
Concealed Wiring - Finolex, Modular Switches &  
Accessories - GM, All Electrical & UPS Wiring,  
Individual TV, Telephone & AC points

**Flooring**  
Vitrified Tiles with Nano Finish, Anti-Skid  
Ceramic Tiles for Utility





**Project Address:**  
 Roma Regency Apartment  
 Sy no -14, Khata - 812,  
 Bidarahali Hobli, Doddagubbi Village,  
 Bangalore East Taluk  
[www.romaregency.in](http://www.romaregency.in)

**Registered Address:**  
 Krishi Technologies Pvt Ltd,  
 No 29/2, Nanjappa Mansion Bldg  
 K.H Road, Bangalore - 27  
 Ph: 080-22221649  
 Email: [marketing@krishitech.org](mailto:marketing@krishitech.org)

[www.romaregency.in](http://www.romaregency.in)



Approved Bank Home Loans  
 